



INTRODUCTION TO BAPETEN THE NUCLEAR ENERGY REGULATORY AGENCY OF INDONESIA

**Presented by Yusri Heni N A
Head of Planning Bureau**

**Technical Visit Officials from Egyptian Senior Delegation
on National Coordination on Nuclear Security Activities in Indonesia**

JAKARTA, INDONESIA, 09 – 11 March 2015

NATIONAL BASIC POLICY ON NUCLEAR ENERGY

- The use of nuclear energy in Indonesia is allowable for peaceful purposes only.
- The use of nuclear energy shall be controlled by the government (by the Regulatory Body, BAPETEN).



LEGISLATIVE FRAMEWORK

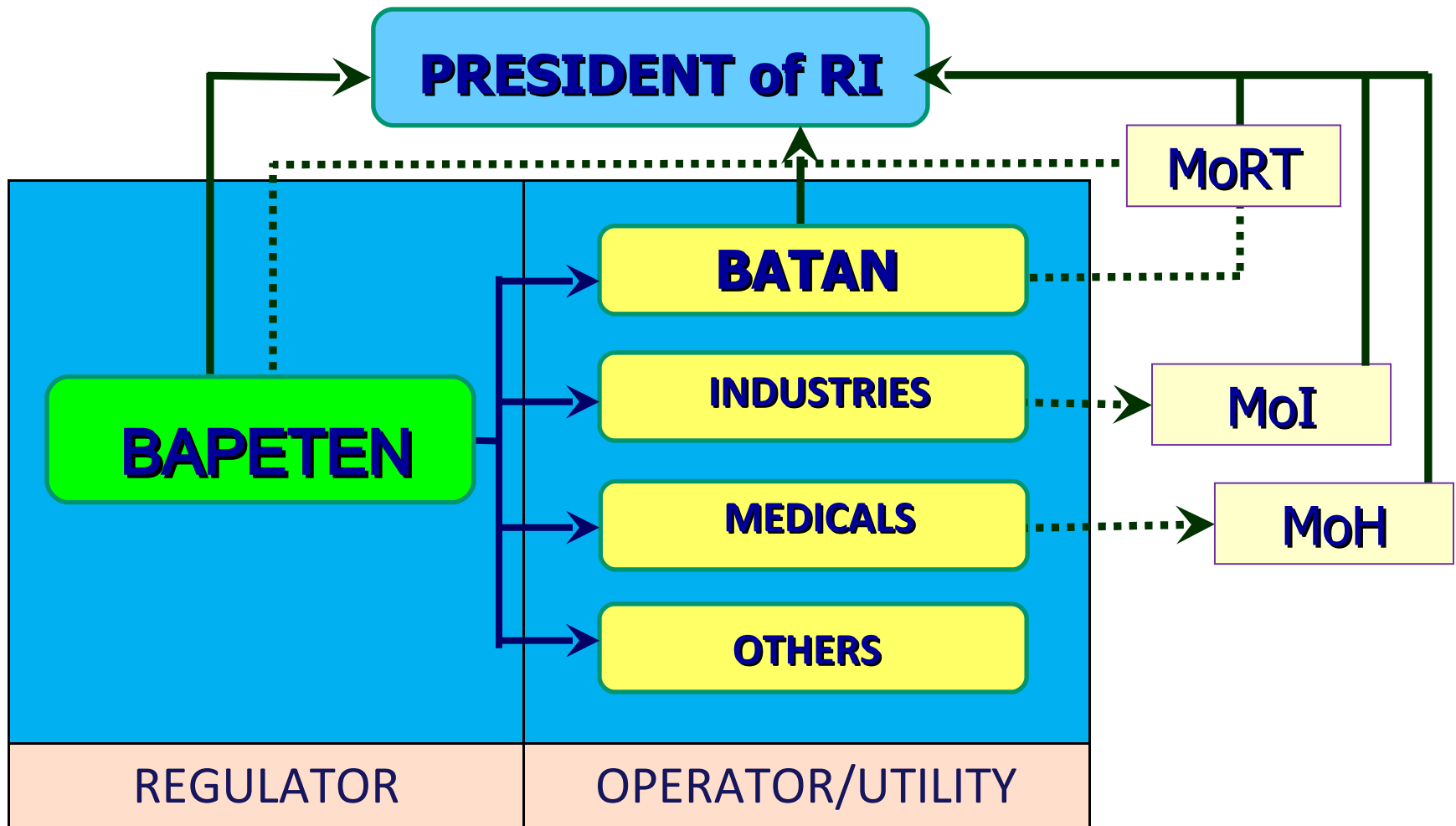
- The basic law for nuclear energy utilization in Indonesia is Act no. 10/1997 on Nuclear Energy.
- Based on the law, two independent agencies dealing with nuclear energy have been established:
 - National Nuclear Energy Agency (BATAN) as a Promoting Body; and
 - Nuclear Energy Regulatory Agency (BAPETEN) as a Regulatory Body.
- As a regulatory body, BAPETEN independently report directly to the President of Rep. of Indonesia (RI).

International Nuclear Security Instruments and Their Ratifications

No.	International Instruments	Instrument of Ratification/Accession
1.	Non Proliferation Treaty (NPT)	Act No. 8/1978
2.	South East Asia Weapon Free Zone	Act No. 9/1997
3.	Comprehensive Nuclear Weapon Test Ban Treaty (CTBT)	Act No. 1/2010
4.	International Convention on Suppression Act of Nuclear Terrorism	Act No. 10/2014
5.	Convention on Physical Protection of Nuclear Materials (CPPNM)	Presidential Regulation No. 49/1986
6.	Amendment of CPPNM	Presidential Regulation No. 46/2009
7.	Code of Conduct on the Safety and Security of Radioactive Sources	Indonesia has signed



BAPETEN: A REGULATORY BODY



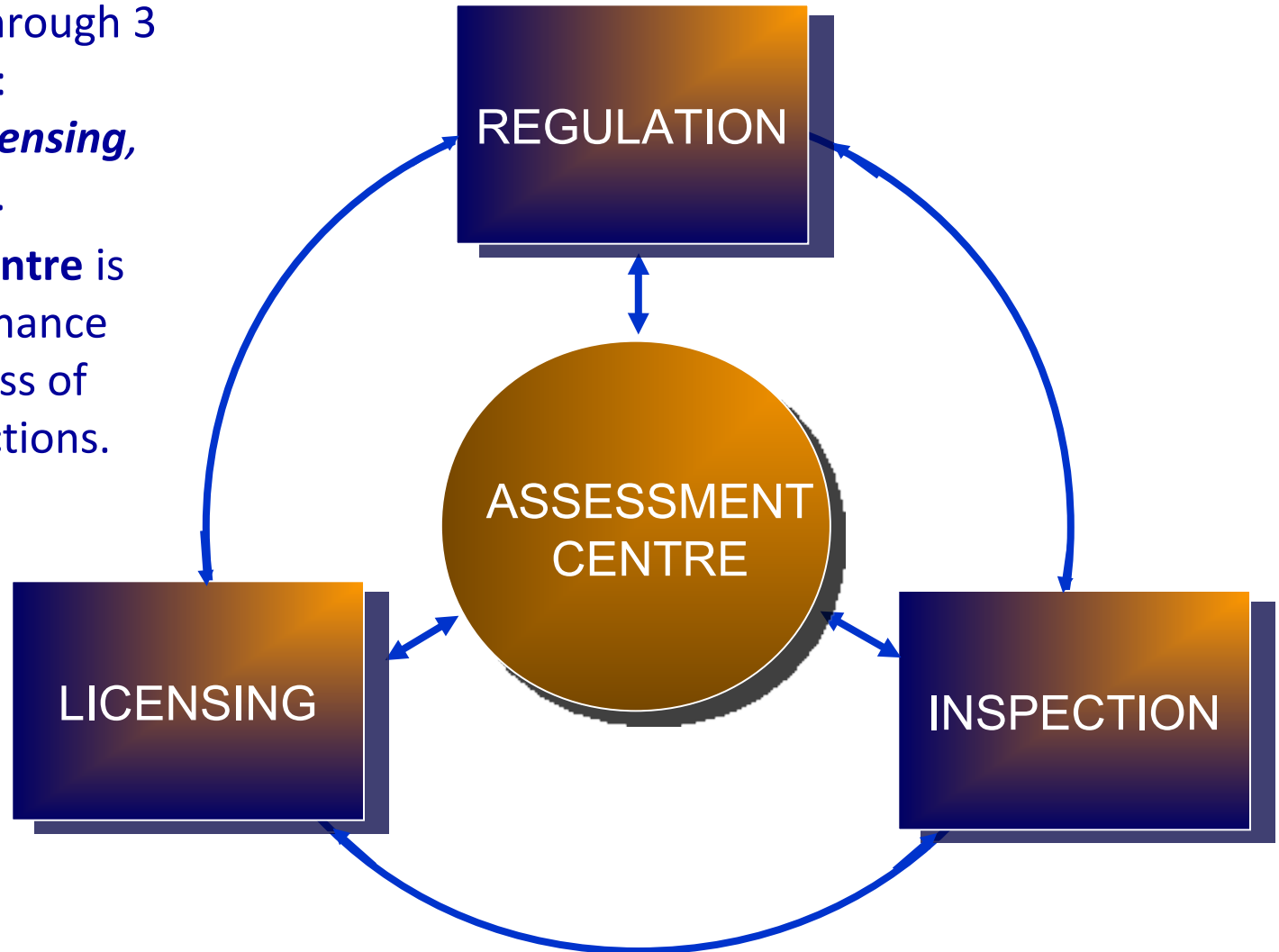
• --- = coordination

✂ → = control

- MoRT = Ministry of Research and Technology
- MoI = Ministry of Industry
- MoH = Ministry of Health

REGULATORY FUNCTIONS

- The regulatory control is performed through 3 main functions: ***Regulation, Licensing, and Inspection.***
- **Assessment Centre** is provided to enhance the effectiveness of regulatory functions.





REGULATORY OBJECTIVES

The objectives of the regulatory control are, inter alia (Act No. 10/1997 on Nuclear Energy):

- to ensure the **safety** and health of personnel, general public, and to protect the environment.

---> **SAFETY**

- to ensure the welfare, **security** and peace of public.

---> **SECURITY**

- to prevent the use of nuclear material from non-**peaceful** purposes.

---> **SAFEGUARDS**

===== > **Controlling '3S' aspects**



VISION AND MISSION

Vision:

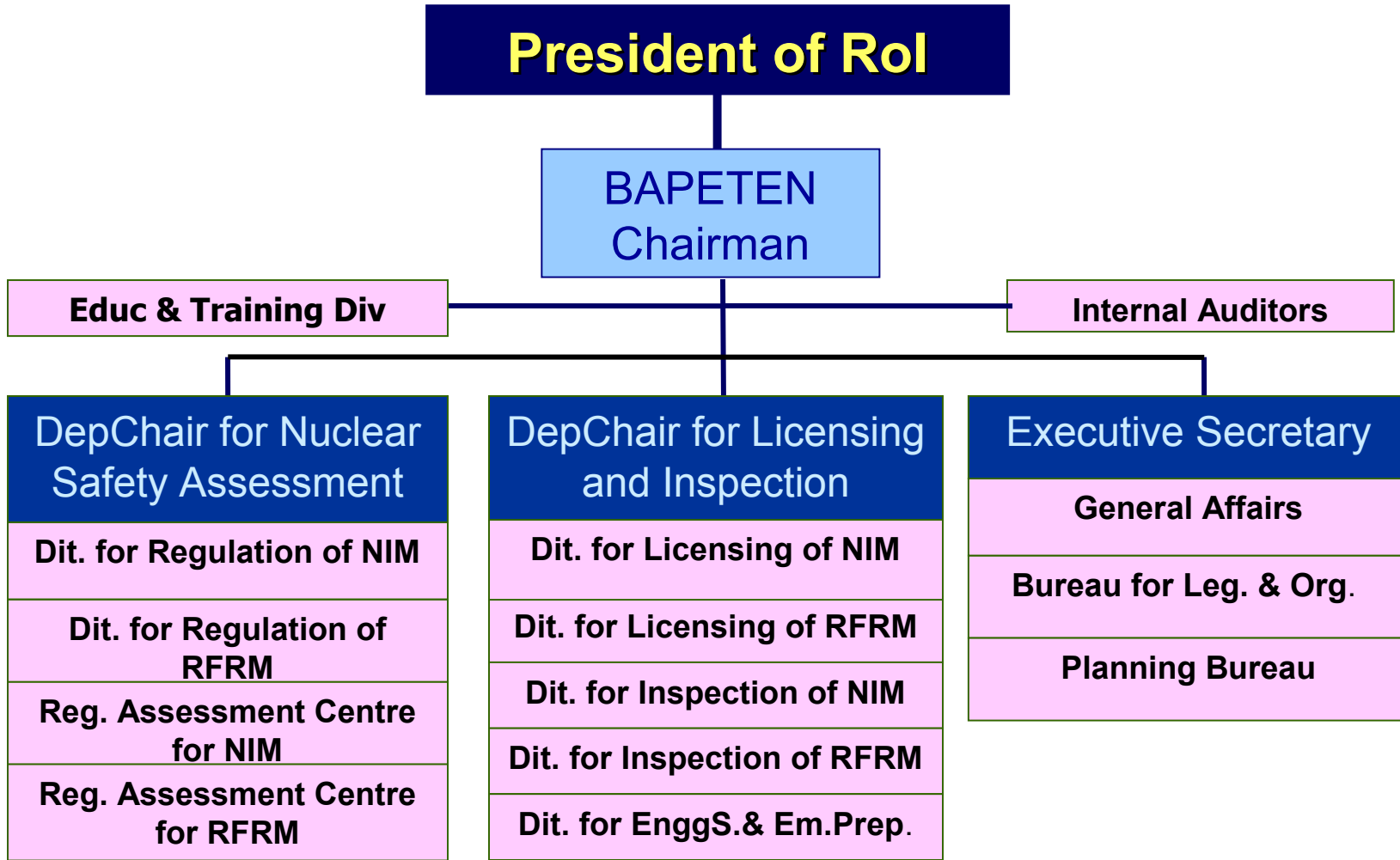
To become the world class regulatory body.

Mission:

1. To perform regulatory function of nuclear energy utilization on the safety, security and safeguards aspects in accordance to the international standards; and
2. To develop a national infrastructure of safety, security, and emergency preparedness.



ORGANISATION STRUCTURE





BAPETEN'S PERSONNEL

A. Total Number of BAPETEN Personnel: 419

B. Distribution of Personnel by Education:

- Doctor degree : 9
- Master degree : 104
- Bachelor degree : 246
- Others : 59

C. Distribution of Personnel by type of works:

- management : 15	- database : 12
- inspection : 48	- programme planning : 9
- licensing : 59	- cooperation : 8
- safety assessment : 43	- legal adviser : 7
- regulation drafting : 36	- budget auditing : 10
- emergency prep. : 22	



CURRENT ACTIVITIES

- **Regular activities on regulatory control**
- **Activities relating to infrastructure development:**
 - Human Resource Development (training and education)
 - Development of regulations:
 - drafting new regulations
 - improving current regulations
 - Improvement of licensing system:
 - completing standards and procedures for licensing
 - enhancing licensing personnel' competence
 - Improvement of inspection system
 - completing standards and procedures for licensing
 - enhancing licensing personnel' competence
 - Capacity building in scientific and technical supports.



BAPETEN PROGRAM PRIORITY

- National support to infrastructure enhancement of nuclear security program
- Regulatory control for the new nuclear power plants
- Strengthening safety assurance for radiological patients in medical facilities



THANK YOU FOR YOUR KIND ATTENTION