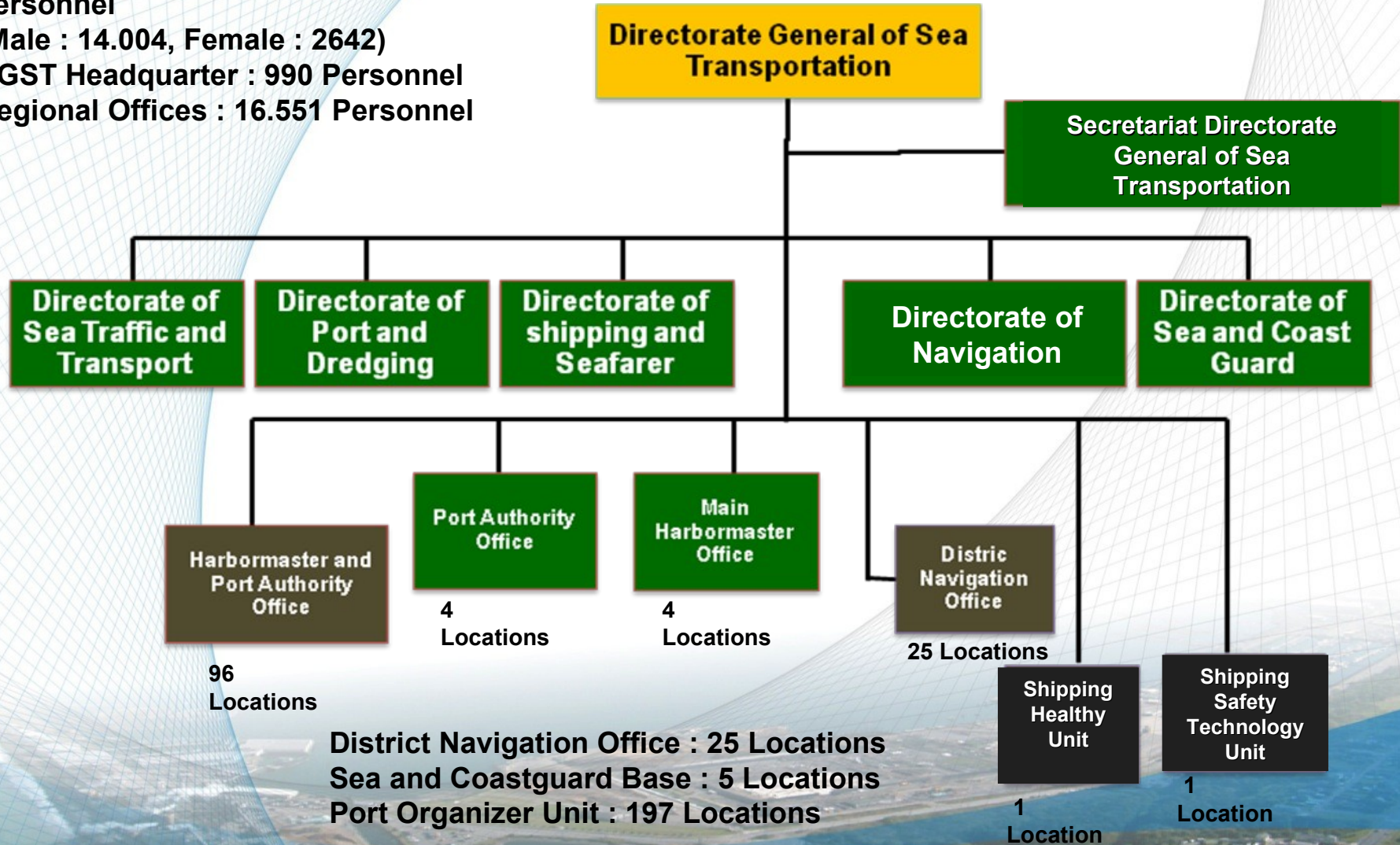


ORGANIZATION STRUCTURE OF DGST



DGST Total Employees : 16.646
personnel
(Male : 14.004, Female : 2642)
DGST Headquarter : 990 Personnel
Regional Offices : 16.551 Personnel



STRATEGY AND IMPLEMENTATION

PORT

STRATEGY

- Swift the activities of loading and unloading at the port and eliminates the high cost economy.
- Re-arranges ports open to foreign trade and port that serves to cross-border.
- Develop infrastructure and port facilities to achieve optimal service levels by increasing private sector participation.
- Develop management port and separate regulatory functions and operators, as well as allowing competition in terminal services in a port and between ports.

IMPLEMENTATION

- ❑ Develop Harbor Master Organization Main, Main Port Authority, KSOP and UPP.
- ❑ Application of the port development policy refers to promote the function of a trade ship, pioneering services, the development of disadvantaged areas and borders, in addition to developing commercial ports as supporting the growth of the national economy.
- ❑ Develop of sea ports regarding to the concentrates on the development of the Master Plan 6 (six) Indonesian economic corridors



PORT REFORM



Remove The Monopoly



Creating wider opportunities for investments in the port sector



Creating a healthy competition in ports and between ports



Clear separation between the regulator and the operator with the establishment of the port authority



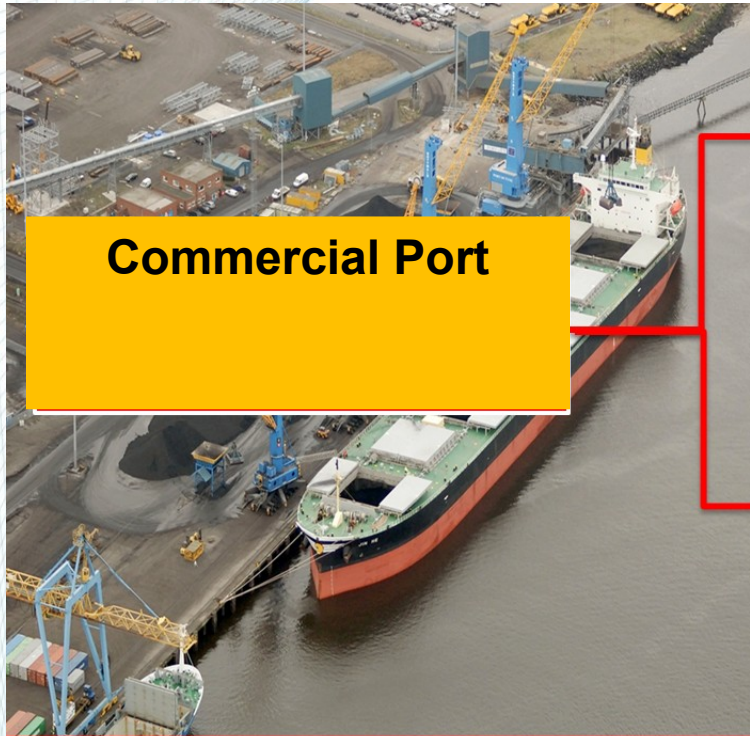
To invite wider participation in port activity and accommodate regional autonomy



**PORT REFORM IN INDONESIA
(BASED ON SHIPPING LAW NO.
17/2008**



INDONESIAN PORT



Commercial Port



Non- Commercial Port

OTORITAS PELABUHAN

4 Pelabuhan Utama : Belawan;
Tanjung Priok; Surabaya & Makassar

KSOP

Kelas I : 9 Lokasi
Kelas II : 15 Lokasi
Kelas III : 16 Lokasi
Kelas IV : 16 Lokasi
Kelas V : 40 Lokasi

UPP

Kelas I : 5 Lokasi
Kelas II : 20 Lokasi
Kelas III : 161 Lokasi

NUMBER OF PORTS IN INDONESIA



**Total Port and Terminal:
more than 2155**



**1130 Non Commercial Port,
managed by Government**



**111 Commercial Port
Managed by PT. PELINDO**



**More than 914 Special
Terminal and TUKS**

HIERARKHI OF NATIONAL PORT

33 MAIN PORTS

Sabang, Belawan, Dumai, Batam (3 terminal), Palembang, Panjang, Banten, Tanjung Priok, Cilamaya, Cilacap, Semarang, Tanjung Perak, Tanjung Bulu Pandan, Benoa, Socah, Teluk Lamong, Pontianak, Sampit, Banjarmasin, Tanah Ampo, Kupang, Balikpapan, Bitung, Makassar, Ternate, Pantoloan, Ambon, Sorong, Jayapura, Merauke

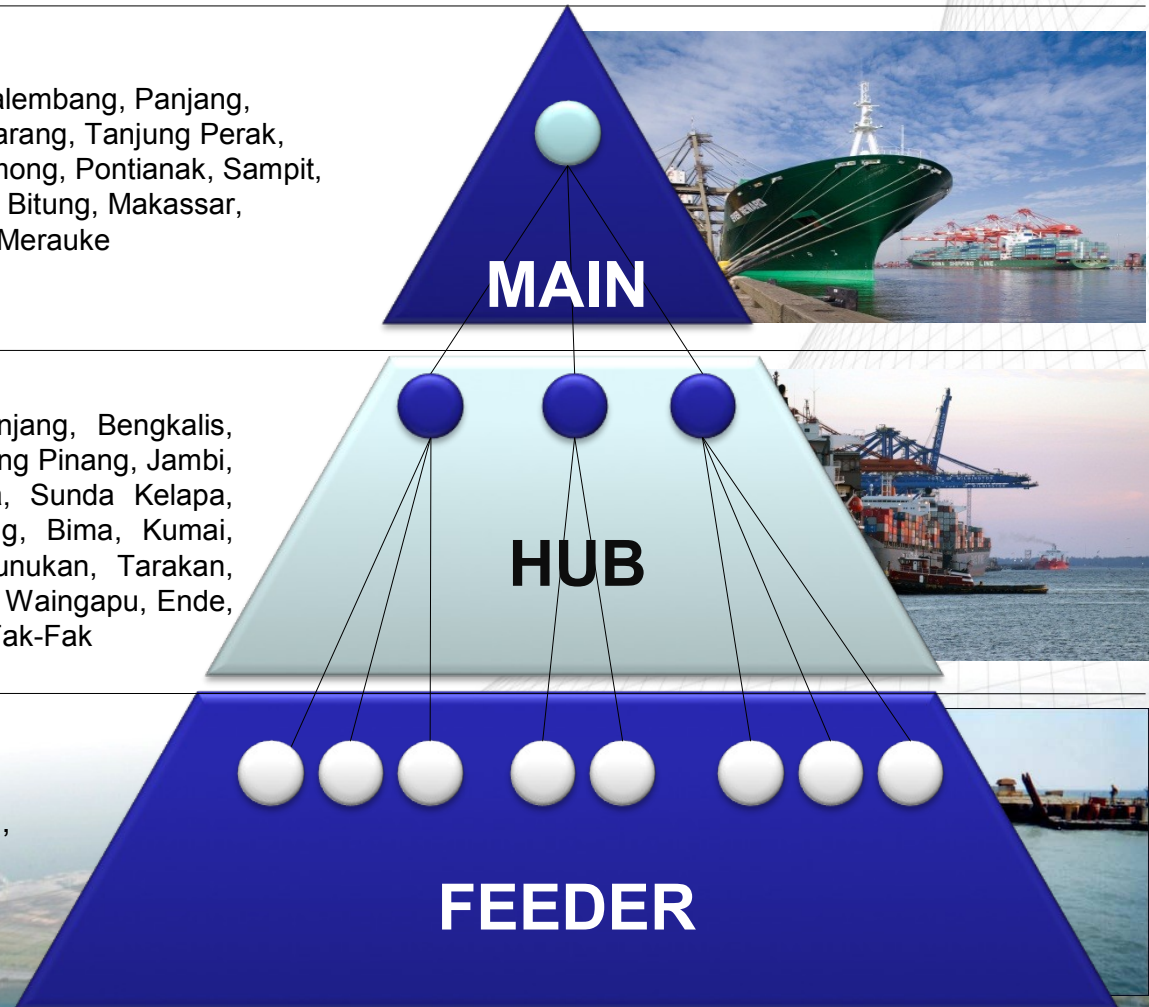
217 HUB PORTS :

Malahayati, Tanjung Balai Asahan, Selat Panjang, Bengkalis, Tanjung Buton, Pekanbaru, Tanjung Batu, Tanjung Pinang, Jambi, Pangkal Balam, Tanjung Pandan, Bojonegara, Sunda Kelapa, Kep. Seribu, Tegal, Batang, Gresik, Sampang, Bima, Kumai, Pelabuhan, Garongkong, Luwuk, Tangkiang, Nunukan, Tarakan, Samarinda, Maloy, Manado, Banggai, Bau-bau, Waingapu, Ende, Manado, Pare-Pare, Kendari, Biak, Manokwari, Fak-Fak

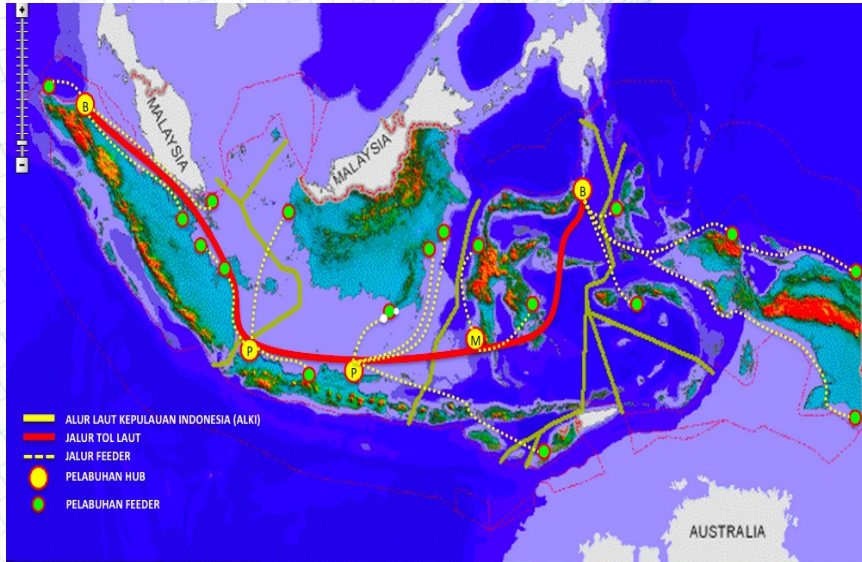
990 FEEDER PORTS :

Susoh, Idi, Air Bangis, Serasan, Nipah Panjang, Malakoni, Bagan Siapi-Api, Toboali, Karang Agung, Teluk Betung, Brebes, Jepara, Tuban, Tuban, Buleleng, Sape, Reo, Lirung, Lawele, Jailolo, Sanana, Serui

TOTAL : 1241 PORTS



TWO STRATEGIC ISSUES ON SEA TRANSPORTATION SECTOR



DEVELOPING MARINE HIGHWAY

Consisting of 5 Hub Ports :
 Port of Belawan/Kuala Tanjung, Tg. Priok,
 Tg. Perak, Makassar, and Bitung
 Consisting of 19 Feeder Ports :
 Port of Sabang, Pekanbaru, Batam,
 Jambi, Palembang, Panjang, Tg. Emas,
 Pontianak, Banjarmasin, Balikpapan,
 Samarinda/Palaran, Kupang,
 Pantoloan, Ternate, Bau-Bau/Kendari,
 Sorong, Ambon, Jayapura, and
 Merauke

SHORT SEA SHIPPING PLAN

PROGRAM

Location of Loading and Unloading Port:

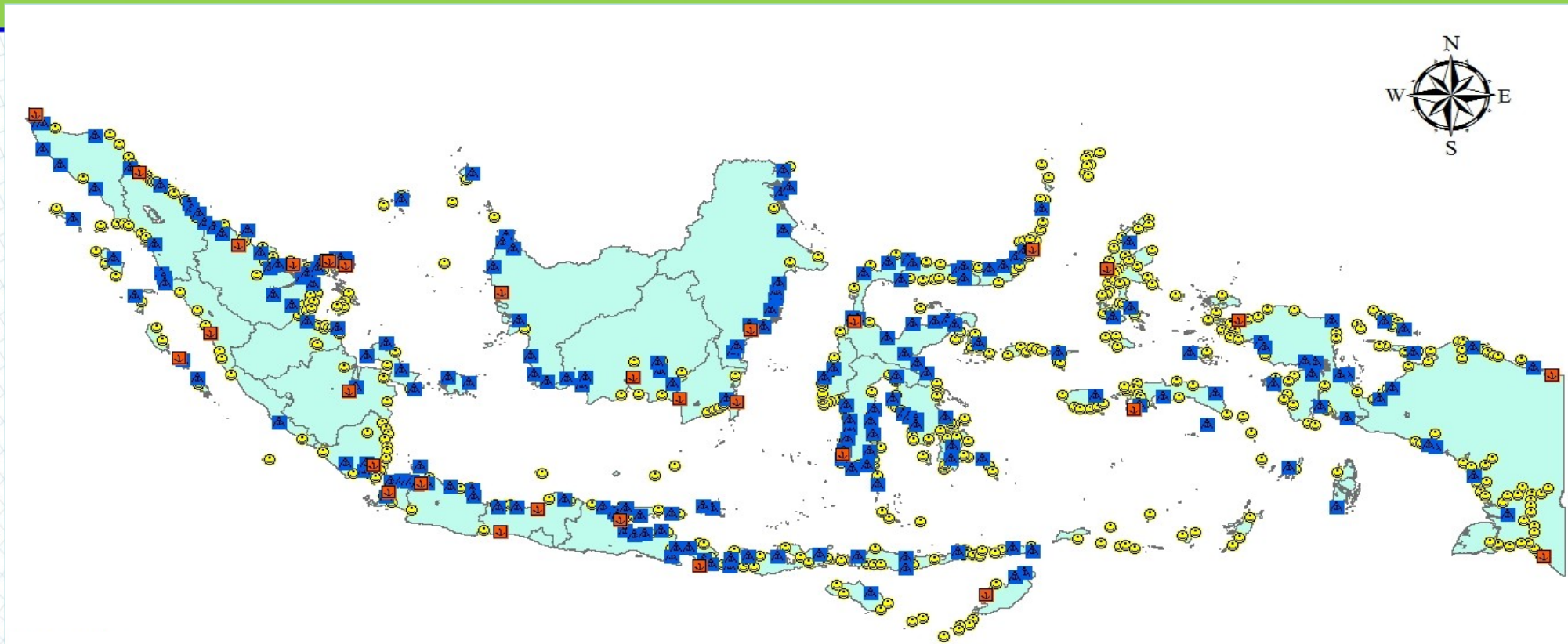
- Jakarta : Marunda Centre Port
- Semarang : Kendal Port
- Surabaya : Paciran Port

Merchant Fleet :

- Ferrindo 5 (PT. ASDP) with capacity 60 trucks, 20 cars and 200 motorbikes ;
- KMP Jatra III (PT. ASDP);
- Ro-Ro vessel 5000 GT (Dit.LLASDP).



THE LOCATION OF INDONESIAN PORT BASED ON HIERARKY OF NATIONAL MASTERPLAN



- 33 MAIN PORTS
- 217 COLLECTED PORTS
- 990 FEEDER PORTS

TOTAL NUMBER OF PORT: 1241
(111 Port manage by Pelindo I – IV)

International Ships and Port Facilities (ISPS) Code

In order to maintain security at the port, Indonesia has also comply with ISPS Code. Until 2014, Indonesia has comply:

| NO | ISPS Code | TOTAL |
|----|---------------|-------|
| 1. | Ship | 1.521 |
| 2. | Port Facility | 340 |



THANK YOU

