



BADAN PENGAWAS TENAGA NUKLIR
Nuclear Energy Regulatory Agency



BAPETEN's Emergency Preparedness and Response Infrastuctures

**Directorate of Technical Support
and Emergency Preparedness**

Jakarta, March 10th, 2015



BAPETEN Emergency Response Team

- Based on BCR No. 1 Year 2015
- Role : Performing the response action on:
 - Orphan Source Finding
 - Trans-Boundary release
 - Nuclear security events



Emergency Response Center

- Facilities:
 - Command center/situation room
 - Monitoring room
 - Stand-by room
 - Equipment room
 - “Bunker”



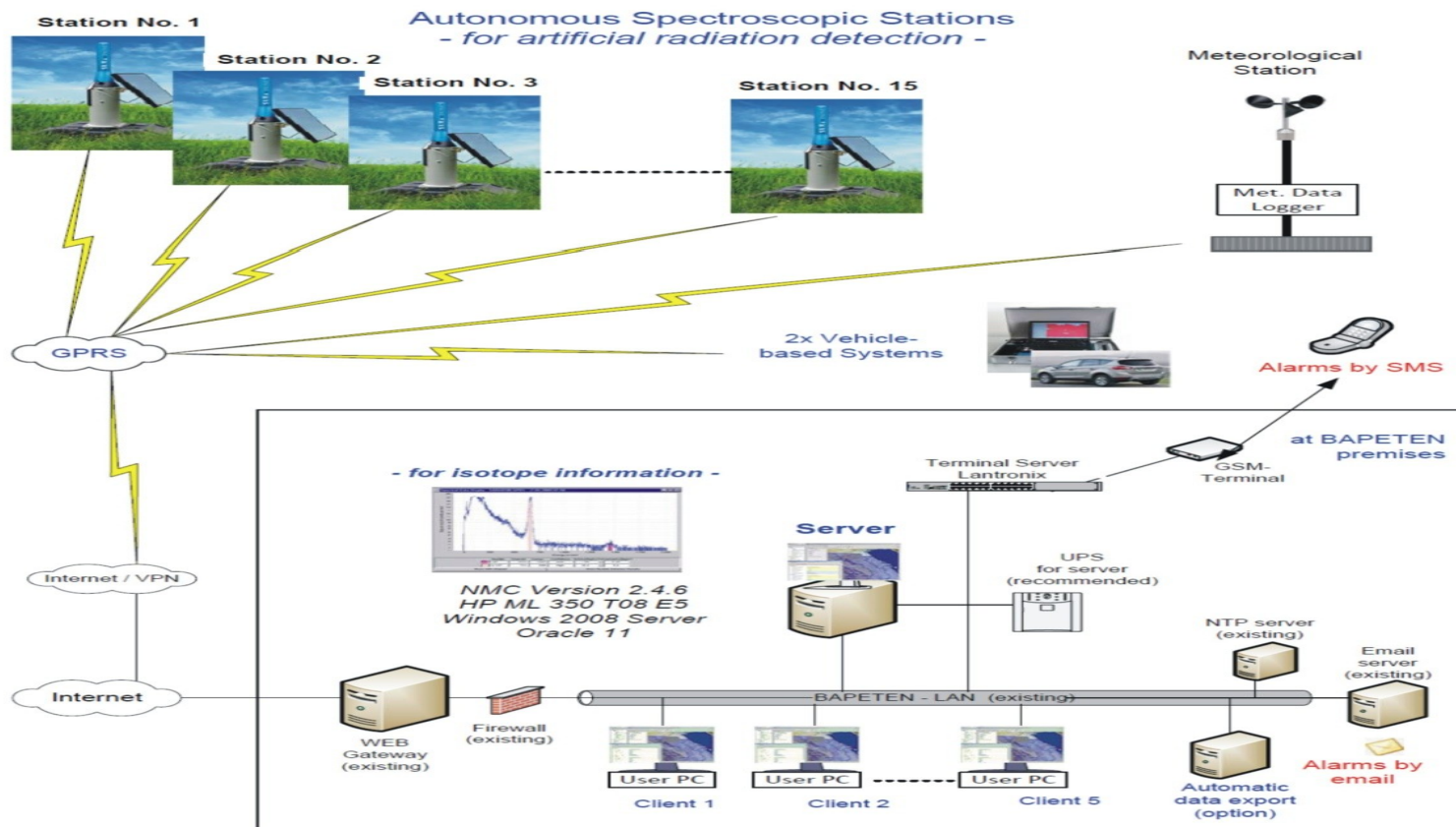
Radiological Monitoring System (RDMS)

- RDMS as a part of the national emergency preparedness system
- RDMS has a function as an early warning system in case of radiological release
- In the future, it is planned to be integrated with the regional radiation monitoring network



Radiological Monitoring System (2)

Environmental Radiation Monitoring and Early Warning System (ERMEWS) for Nuclear Agency of Indonesia (BAPETEN)





BADAN PENGAWAS TENAGA NUKLIR
Nuclear Energy Regulatory Agency



Radiological Monitoring System (3)

Implementation Plan





Radiological Monitoring System (4)

Implementation Status (2013)

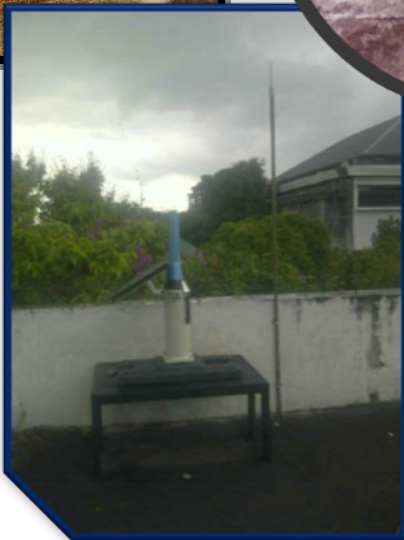
- 4 monitoring station has been installed in Serpong Nuclear Area
- 1 monitoring station has been installed in Bandung
- 1 monitoring station has been installed in Yogya



BADAN PENGAWAS TENAGA NUKLIR
Nuclear Energy Regulatory Agency



Radiological Monitoring System (5)





BADAN PENGAWAS TENAGA NUKLIR
Nuclear Energy Regulatory Agency



Radiological Monitoring System (6) - Mobile Equipment

- Mobile environmental radiology monitoring unit





SIMONPAKO

- Abbreviation of Sistem Monitoring Parameter Kendali Operasi (Operational Control Parameter Monitoring System)
- Developed on 2013
- To monitor operational control parameters of RRs in Indonesia (safety related parameters)

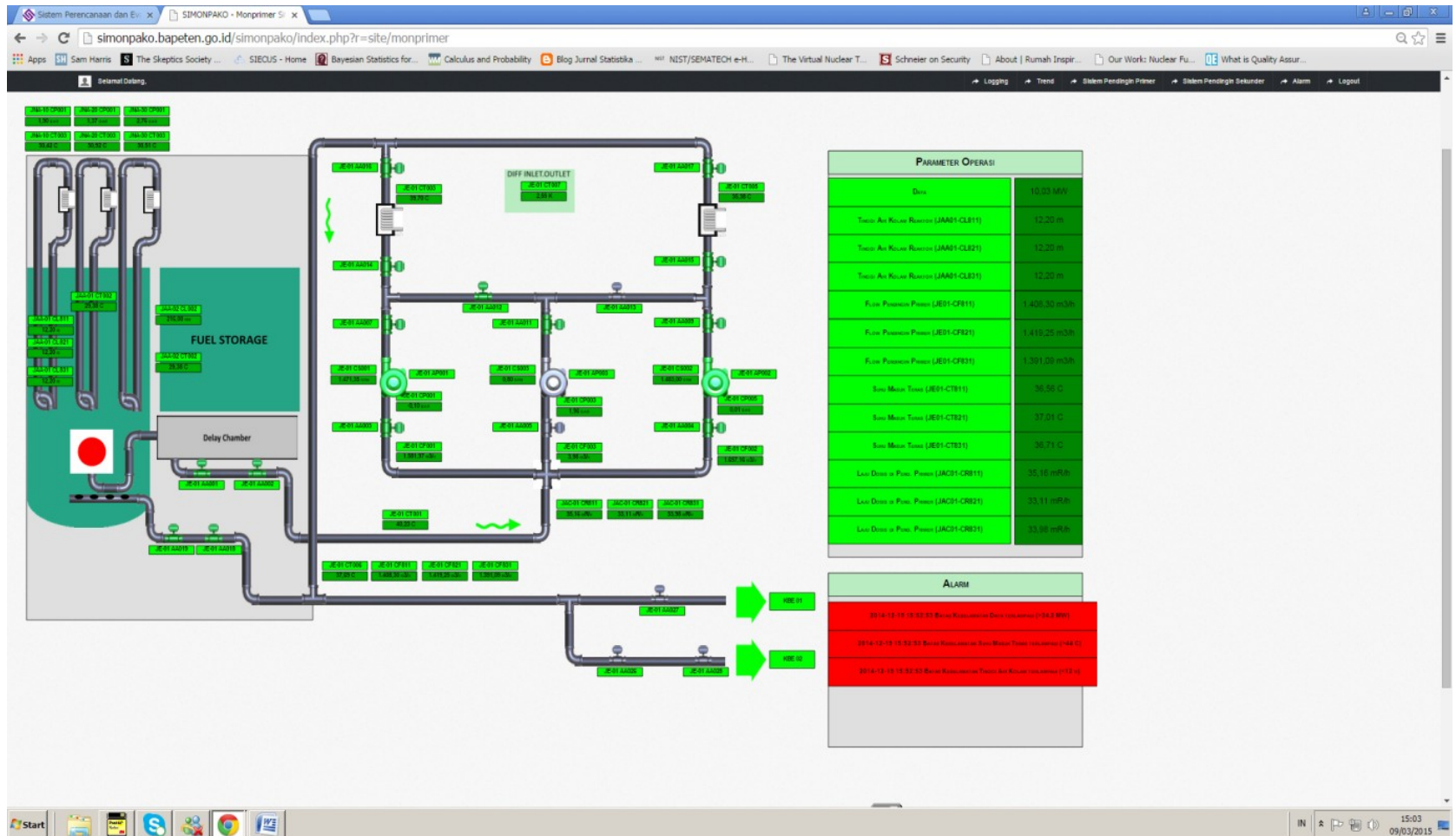


SIMONPAKO (2)

- On normal condition, the monitoring performed by Directorate of Inspection for NIM
- On emergency condition, the monitoring will be performed by Directorate of Technical Support and Emergency Preparedness
- Current status : Connected to RSG-GAS



SIMONPAKO (3)

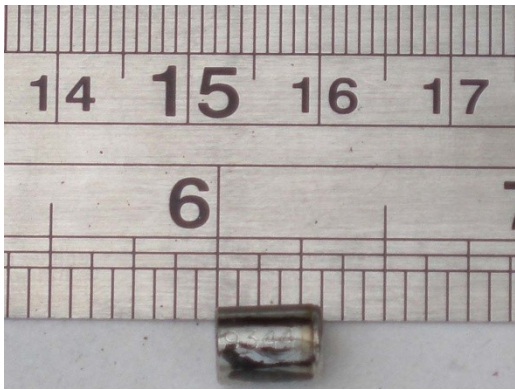




BADAN PENGAWAS TENAGA NUKLIR
Nuclear Energy Regulatory Agency



Emergency Responses



**Source
Recovery, Duri,
Riau**

Source Recovery, Cirebon, West Java





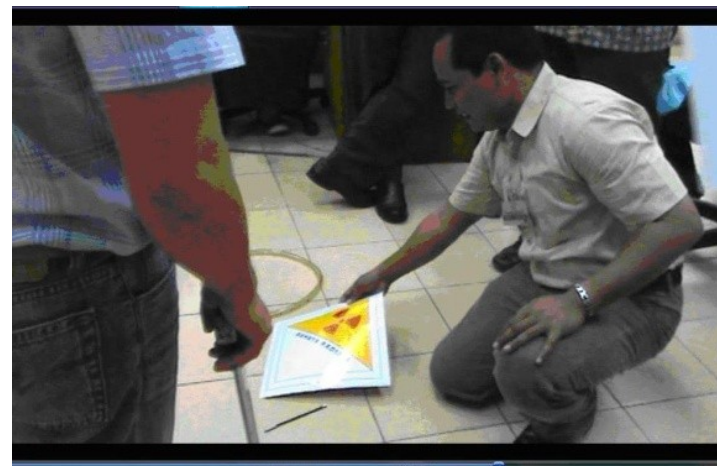
BADAN PENGAWAS TENAGA NUKLIR
Nuclear Energy Regulatory Agency



Industrial Radiography Incident, East Kalimantan



Industrial Radiography Incident, Tangerang, Banten





BADAN PENGAWAS TENAGA NUKLIR
Nuclear Energy Regulatory Agency



Orphan Source Survey at Scrap Metal Facilities



Fukushima Monitoring





BADAN PENGAWAS TENAGA NUKLIR
Nuclear Energy Regulatory Agency



Exercises



**Scenario : Transportation
Accident involving Rad. Material.
Bandung, 2013**



BADAN PENGAWAS TENAGA NUKLIR
Nuclear Energy Regulatory Agency



**Scenario : Transportation
Accident involving Rad. Material.
Surabaya, 2011**



BADAN PENGAWAS TENAGA NUKLIR

Nuclear Energy Regulatory Agency



**Scenario ; Severe accident at GA.
Siwabessy Reactor. Serpong 2010**



BADAN PENGAWAS TENAGA NUKLIR
Nuclear Energy Regulatory Agency



Thank You